

## Duplex Penthouse for sale in Nueva Andalucía, Costa del Sol

3 Bedrooms | 3 Bathrooms | 395 m<sup>2</sup> Interior | 219 m<sup>2</sup> Terraces | **Garage** Yes | **Garden** Yes | **Pool** Yes  
€ 2,282 IBI | € 194 Rubish tax | € 12,192 Community fees



### Property Description

Discover Marbella's best lifestyle in this fully renovated duplex penthouse, where top-quality materials and exquisite craftsmanship converge to create a truly exceptional home. This corner unit offers unparalleled privacy and tranquility, boasting panoramic views stretching from the mountains to the sea. Step inside to find thoughtfully designed details, such as bespoke lighting, built-in bookshelves, and elegant wall moldings.

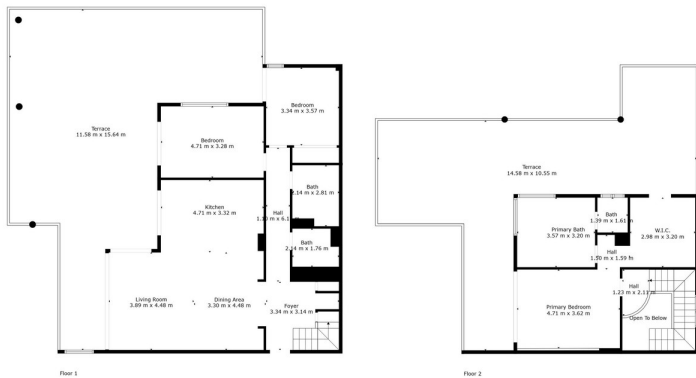
With three bedrooms and three bathrooms spread across two floors, the master bedroom occupies its own private level, complete with a walk-in closet and a luxurious bathroom. Enjoy the outdoors on two large south-facing terraces wrapping around the apartment, totaling over 200 m<sup>2</sup>, perfect for entertaining and featuring a stunning outdoor kitchen. The expansive windows pour natural light and makes the spectacular views a part of the apartment.

Nestled in a lush green environment, this gated community offers peace of mind with a nighttime guard, along with two swimming pools and a gym for residents to enjoy. Additional conveniences include two spacious garage spaces, an EV charging station, and a storage room. The location offers beautiful hiking trails just around the corner, while Puerto Banus is only a 10-minute drive away.

This information is presumably correct but not guaranteed. The price or sale status can be modified without prior notice. Contact us today for a viewing or to arrange to visit this home!

Urb. Marbella Real Local 2 (29602) Marbella, Spain Tel: +34 952 765 428 - Email: [info@marbellaliving.com](mailto:info@marbellaliving.com)

## Duplex Penthouse for sale in Nueva Andalucía, Costa del Sol



TOTAL: 161 m<sup>2</sup>  
FLOOR 1: 108 m<sup>2</sup>, FLOOR 2: 53 m<sup>2</sup>  
EXCLUDED AREAS: TERRACE: 181 m<sup>2</sup>, OPEN TO BELOW: 4 m<sup>2</sup>  
Floor Plan Created By Cubicore App. Measurements Deemed Highly Reliable But Not Guaranteed.

